



KANOMLJA

Valley of the Idrija Fault

5

A deep valley,
cut between the
Vojsko Plateau and the
Krnice Ridge.



Organizacija
Združenih narodov
za izobraževanje,
znanost in kulturo

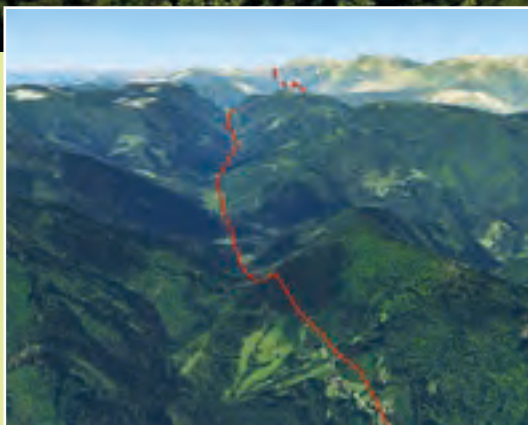


Idrija
UNESCO
Globalni
Geopark

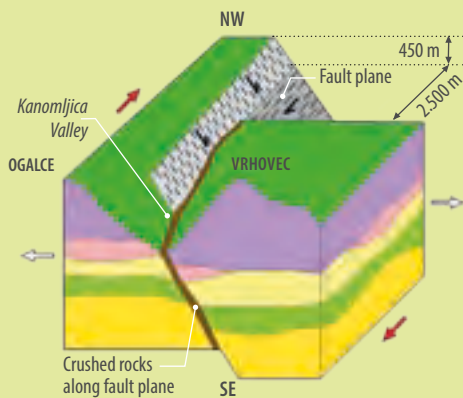




View of Kanomljica Valley from the hamlet of Kanomeljsko Razpotje



The Idrija Fault descends from Kanomeljsko Razpotje into the Kanomljica Valley, runs along the entire valley to the Oblakov vrh saddle, and continues into the Trebuša Valley.



Over the past million years, the rocks along the fault have been displaced by 2.5 km.

KANOMLJA Valley – the deepest cut into the Earth's crust along the Idrija Fault

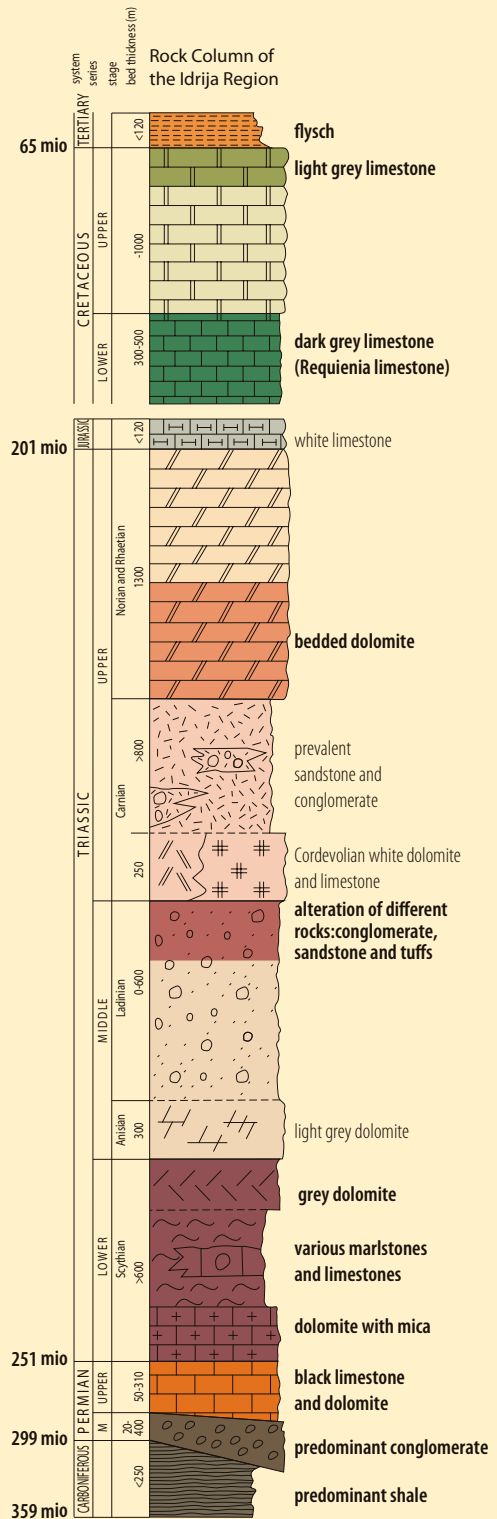
The inhabitants of Kanomlja could easily be referred to as »Fault dwellers« (Prelomniki), since the better part of the valley is shaped along the famous Idrija Fault.

The Idrija Fault was formed as a result of the underthrusting of the Adriatic plate beneath the Eurasian plate. It can be seen on satellite photos as a distinct, almost straight line. The fault extends from Čabranka in Croatia across the entire territory of Slovenia and continues into Italy. Deep valleys, steep gorges, saddles and levellings were formed along its almost 120 km-long course. Running along the fault are the Planina polje and Cerčno polje, the Loka Valley, and the deeply cut valleys of the Idrijca, Kanomljica and Soča rivers.

The massive shifts along the Idrija fault have resulted in the **highly variegated rock structure** of the Kanomlja Valley. Here one finds the oldest rocks in Slovenia – Carboniferous shales that are at least 320 million years old. The Bratuševa grapa gorge is home to flysch rocks that are »only« 65 to 45 million years old.



Tectonic clay



Valley of farms, mills, sawmills and mischievous tales

Kanomlja was first mentioned in written sources in the far-off year of 1335, when the patriarch of Aquileia enfeited a nobleman from Cividale del Friuli with the territory.

Ten farms are said to have thrived in this area. The farmers and cottagers made a living primarily through mountain

farming, livestock breeding, small crafts, and seasonal employment. Due to low taxes, the farms developed rapidly. Numerous mills, sawmills and stamp mills operated along the Kanomljica stream and its tributaries.

In the 16th century, iron ore was also mined in the Kanomlja Valley, but only for a brief period. The ironworks were located at Fežin and later in Spodnja Idrija.

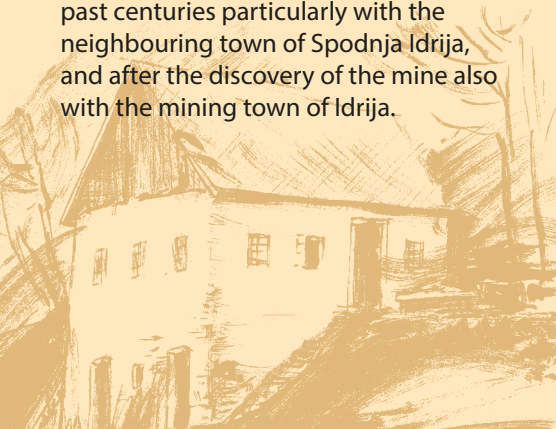
Kanomlja is famous for its formerly rich narrative folklore, numerous village buffoons, and lively social life. Through its history the area also nurtured links with other areas, mainly with the cities of Gorica and Cividale del Friuli, in past centuries particularly with the neighbouring town of Spodnja Idrija, and after the discovery of the mine also with the mining town of Idrija.



Haymakers and rakes



Sewer





View towards Oblakov vrh



Cooking in the oven



Picking potatoes



From the farmer's workshop



Artificial lake behind the klavže



Klavže gate with opening mechanism

Ovčjak Klavže

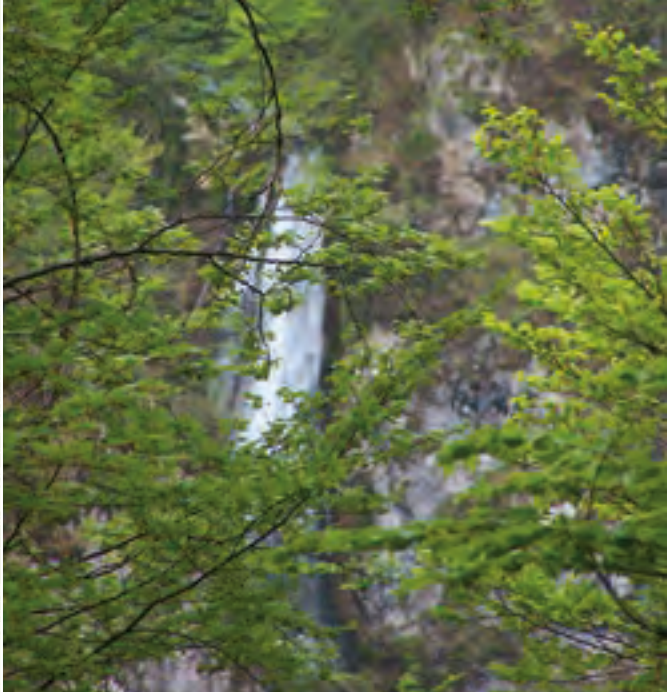
In the period of the Napoleonic Illyrian Provinces, a series of mighty water barriers known as »klavže« were built in the years 1812-1813 and named the Ovčjak, Kanomlja or French klavže. These water barriers enabled 1000 to 1500 m³ of wood, pitwood and timber to be floated at one time over a distance of 8 km to Spodnja Idrija, and operated for the needs of the Idrija mine until 1912. Visitors are today welcomed by restored klavže, behind which is an artificial lake whose water power is no longer used to float wood, but to drive a small hydro power plant.



Ovčjak Waterfall

A footpath winds along the right bank of the stream, past the artificial lake, all the way to the waterfall. A multitude of coloured stones can be found in the stream that has cut its course into the Dolomite rock. The step-like, 40-metre waterfall descends in large cascades into the intermediate shelves.

Yellow Paederota (*Paederota lutea*)



Carniolan Primrose
(*Primula carniolica*)

Stinking Aposeris
(*Aposeris foetida*)



Along the path visitors will discover a typical mixed forest comprising, alongside spruce and beech trees, also maple, hornbeam, ash, mountain ash and, along the waterbank, hazel and willow trees. Thriving in the crags beneath the waterfall are, beside the Carniolan Primrose, typical plants inhabiting the crevices of high-lying alpine communities: Yellow Paederota, Daisy Star, German Asphodel, Alpine Butterwort, Rock Valerian, Twoflower Violet, and the Hairy Alpenrose.



Along the Central part of Kanomlja

5

Starting point: Fishing lodge (Sr. Kanomlja), Length: 9.5 km
Cycling time: 1 h; **Walking time:** 5 h
Difficulty level: difficult cycling trail (easy footpath)
Altitude difference: 409 m

Begin your trip at the **fish farm in Srednja Kanomlja**. From there, follow the road towards Vojsko to the exit for the **klavže**, and continue for another two kilometres until you reach the parking area. Higher up along the stream, only a ten minute's walk from the klavže, is the **Ovčjak waterfall**. On the way back, visit the **Pr' Ivaniš forge** and the **Šturmajce homestead**, as well as **Klemenčič's mineral collection**. The »V Klamah« gorge is accessible from the mainroad in Gorenja Kanomlja 2 in Ilova grapa. Follow the trail and visit the viewpoint at **Oblakov vrh**.

-  Viewpoint
 -  Inn with lodging
 -  Lodging
 -  Craftsmen and producers of local produce
 -  Beekeeping
 -  Hunting lodge
 -  Fishing lodge
 -  Natural heritage
 -  Cultural heritage
 -  Museum collection
 -  Ski run
-  Cycling path
-  Hiking path







Blowing the fire

Pr' Ivaniš Forge

Blacksmithing skills were passed down from generation to generation. The blacksmith master used charcoal to make hand-forged products for the needs of his own farm and the nearby surroundings.

Today, Sandi Bončina, the grandson of the last blacksmith, occasionally lights and blows a fire to repair one of the old iron tools. In addition to such forging equipment as the anvil, blower (»šmitna«), drilling machine, vise and trough, several other tools have been preserved in the forge, such as hammers, tongs, additional parts for the anvil, and iron products – ordinary and working horseshoes, wedges, nails, ...



Šturmajce Homestead

High above the right bank of the Kanomljica stream beneath the Vojsko Plateau stands the Šturmajce homestead. In the past, Šturmajce was among the largest farms in Kanomlja, comprising as many as 100 hectares of high-lying meadows, fields, pastures and forests. Before the First World War, approximately 70 persons lived and worked at Šturmajce, and in the 19th and 20th centuries the entire homestead comprised 9-12 buildings. In addition to the house, granary, barn and hayrack, there was also a fruit drying room (pajštva), litter stand, four small houses for lodgers, an additional hayrack, mill, and an earth cabin for storing produce.

Thanks to the efforts of its current managers, Milka and Julijan, the interior of the house, together with the black kitchen, has to a great degree preserved its authentic appearance as a farm house from the first half of the 20th century. The Kanomlja Tourist and Culture Society is endeavouring to »revitalize« the homestead by organising cultural, educational, museum and tourist events on its premises.



Black kitchen



Rustic frescos at Šturmajce

Janez Klemenčič's Mineral Collection



Model of shaft with lift and the collection of minerals, ores and fossils

The collection comprises almost 2000 minerals, ores, fossils and rocks owned by an amateur collector, Janez Klemenčič, a former Idrija miner. The collection is particularly rich in various Idrija cinnabar ores. The collection also features a model of the cross-section of the Idrija pit and a shaft with a lift.



Sinkhole in Klame

"V Klamah" Gorge

»V Klamah« is a picturesque, approx. 300 metre-long, hardly accessible gorge carved in limestone by the Kanomljica stream. The fracturing of limestone due to the vicinity of the Idrija Fault and its solubility are causing the karstification of rocks. At the entrance to the gorge in Ilova Grapa, a sinkhole has formed on the left side of the riverbed into which a large portion of the Kanomljica stream disappears during low water levels. A few metres lower, there is a crack on the left side of the riverbed through which the sound of a strong wind can be heard, as well as the murmuring of an underground watercourse. According to data collected so far and various colorations, the water crosses the bed of the Kanomljica stream underground, where it joins the waters of the Ovčjakarica and Vovška grapa, springing up in a strong and permanent karst spring once known as the spring near Šinkovčeva žaga, but nowadays known as Zbir pri Mohoričevi žagi.



V Klamah gorge



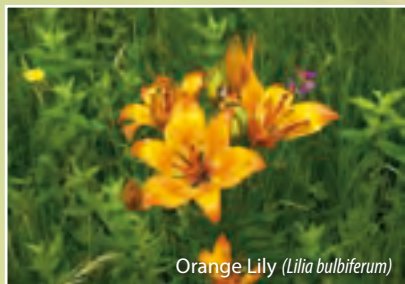
From spring to late fall, the meadows are filled with colourful flowers.



Pannonian Thistle with burnet (*Cirsium panonicum*)



Snowdrop (*Campanula s.p.*)



Orange Lily (*Lilium bulbiferum*)

Blossoming Meadows



Like the rest of the world of the Idrija-Cerkno hills, Kanomlja is a place where meadows are still filled with colourful wild flowers. Spring carpets of saffron are replaced by many species of Turkish and Carniolan lilies, buttercups, columbines, wolfsbanes, snowdrops, rampions, and carnations. Clearings and meadows are home to various orchids: elder-flowered orchids, heath spotted orchids, terrestrial orchids. In the vast beech-fir forests, one comes across the yew and holly. Roe deer, red deer and chamois find shelter here.



Oblakov vrh

Excursion tip

At **Oblakov vrh**, you will find yourself standing in the middle of the Idrija Fault zone, where a view of one of the **largest faults in Slovenia** opens up along the Kanomlja Valley on the one side and the Hotenja Valley on the other side, and where the largest earthquake in Slovenia occurred in 1511.

Excursion tip: A gravel road leads from the saddle towards **Utrski vrh**, where you can descend into the **Hotenja Valley** and **Dolenja Trebuša**.

You may decide to walk up to the Krnice Ridge and the highest lookout peak of **Lokvarski vrh** (1079 m).

Or to Vojsko plateau on the opposite side, with its viewpoint **Hudournik** (1148 m).

The exceptional natural and cultural heritage of the Kanomlja Valley, as well as its friendly and hospitable inhabitants, will remain in your memory forever!



INFORMATION:

- **Kanomlja Tourist and Culture Association,**
t: +386 (0)41 766 179, e: nadagolija@gmail.com
e: tkdkanomlja@gmail.com
www.tkd-kanomlja.si

Tours of collections and homesteads

- **Šturmajce Homestead** – heritage building and ethnological heritage, Gorenja Kanomlja 43, Spodnja Idrija; t: +386 (0)41 919 431 (*advance booking*)
- **Pr' Ivaniš Forge,** Gorenja Kanomlja 40, Spodnja Idrija; t: +386 (0)31 392 903 (*advance booking*)
- **Mineral Collection,** Gorenja Kanomlja 44, Spodnja Idrija; t: +386 (0)31 877 353 (*advance booking*)

Culinary offer and accomodation

- **Pr Ribcah Inn,** Srednja Kanomlja 34, Spodnja Idrija; t: +386 (0)41 407 688 (*advance booking*)
- **Polak Catering,** Spodnja Kanomlja 23, Spodnja Idrija; t: +386(0)31 664 780 (*on weekdays*)

Organic/home-made products

- **Rupnik Ciril Honey Products,** Srednja Kanomlja 66, Spodnja Idrija; t: +386 (0)41 475 308
- **Bojan Troha - BOVA, Honey Products,** Spodnja Kanomlja 27, Spodnja Idrija, t: +386 (0)41 935 715

Sports activities

- **Ribiška družina Idrija,** Idrija Fishermen's Society, Srednja Kanomlja 34, Spodnja Idrija; t: +386 (0)41 407 688
- **Jelenk Hunters' Society,** Na vasi 36, Spodnja Idrija; e: tajnik.ldjelenk@gmail.com
- **Krekovše Hunters' Society,** Idrijska Bela 21, Idrija; t: +386 (0)51 689 098

Traditional events

- **Local festival in Kanomlja** (*July*)
- **Hike to Lokvarski vrh** (*October*)



KANOMLJA

Length: 14 km

Width: 0.8 to 4.0 km

Area: 24.50 km²

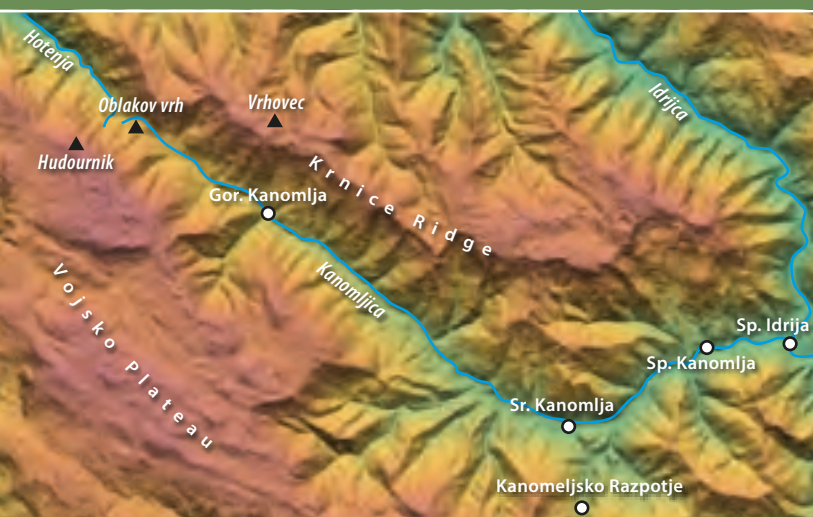
Settlement: Zgornja and Srednja Kanomlja (430 inhabitants), Spodnja Kanomlja (265)

Forest community: Dinaric beech-fir forest (*Omphalodo-Fagetum*)

Lookout peaks: Lokvarski vrh (1079 m), Hudournik (1148 m)

View of the Idrija Fault: Oblakov vrh (721 m), Kanomeljsko Razpotje (580 m)

Watercourse: Kanomljica stream and tributaries – natural heritage of national importance



The Kanomlja Valley is cut into the middle of the Idrija hills between the **Vojsko Plateau** and the **Krnice Ridge**. In the area extending from Spodnja Idrija, where the **Kanomljica** discharges into the Idrija River, to the **Oblakov vrh** saddle lie the villages of Spodnja Kanomlja, Srednja Kanomlja and Gorenja Kanomlja.

The main road leading through the valley from Oblakov vrh northward continues along the Hotenja valley to **Dolenja Trebuša**, and branches off to the east towards **Krnice** and **Šebrelje**, and to the west towards the **Vojsko Plateau**.

Published by: Idrija Tourism Board • Concept: Martina Peljhan • Texts by: Jože Čar, Janez Kavčič, Martina Peljhan, Maja Topole, Anka Vončina • Translated by: Suzana Stancič • Design by: Ivana Kadivec, Jaka Modic • Photos by: Tinka Gantar, Damjan Makuc, Danica Markič, Jani Peternelj, David Tončič, Gregor Topole, Božo Uršič, Marko Serafimović, Robert Šinkovec, Anka Vončina, Robert Zabukovec, Dunja Wedam, Privat arhiv Nada Golija Vastič and Tončka Boškin • Maps by: Rafael Bizjak, Kartografija d.o.o. • Printed by: A-media d.o.o. • Edition: 1500 copies • Idrija, November 2019

